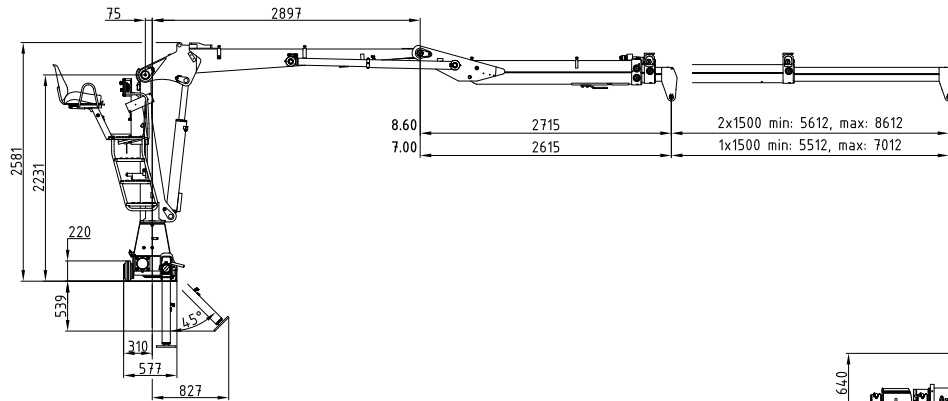


6Z 7Zp+

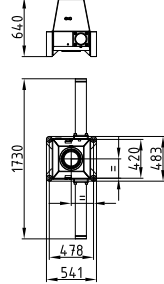
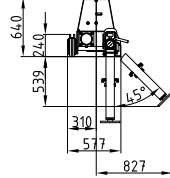
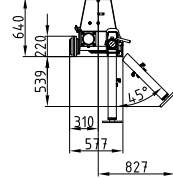
- 52 - 64 kNm
- 7,0 - 8,6 m
- 2,66 - 2,75 m
- 3,3 - 4,1 m
- 1.270 - 1.350 kg
- 410°
- 14 kNm
- 205 - 240 bar
- 1x
Minimum 60 l/min
~ 30 kW
- LS
Minimum 90 l/min
~ 35 kW



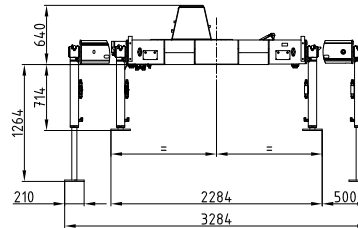
Kransockel Standard
Crane base standard

Kransockel mittig
Crane base centered

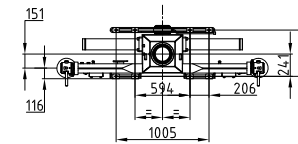
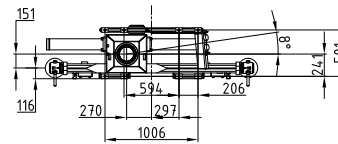
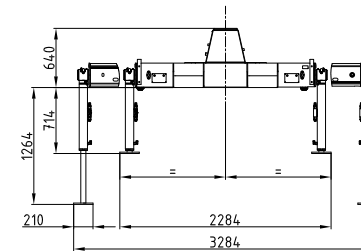
Kransockel stationär
Crane base stationary



Kransockel Standard
Crane base standard

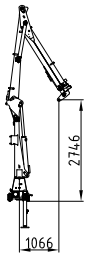
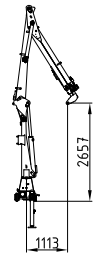


Kransockel mittig
Crane base centered

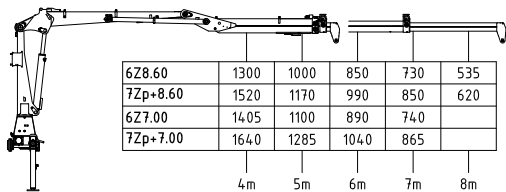
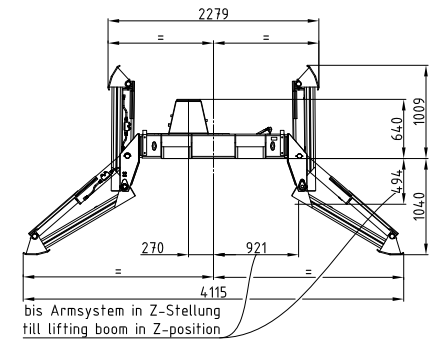


8.60

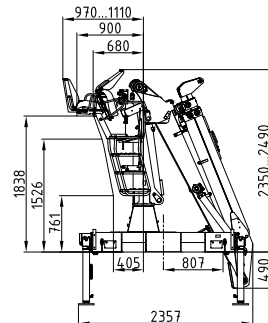
7.00



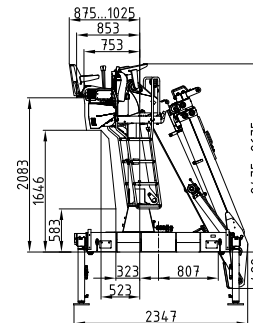
Klappabstützung
Folding support



Rücksitz 01
Back seat 01



Rücksitz 04
Back seat 04



Seitensitz 04
Side seat 04

